



EVER

SPORTSTYLE

SPORTSTYLE

T7 FOR THE FANBA...
L COURT FIT

UMA X LIBE...

puma®

New global multiplication concept

The partnership between Schweitzer and the world's third largest sporting goods manufacturer **PUMA** began in 2022 with the design of a multiplication concept for the global market.

In order to show the client's management a lifelike mockup, a **dark store** was developed in **1:1 format**, produced and installed at Puma's HQ. **Speed** was a **decisive factor** here, as the first store opening was scheduled for a few weeks later.

To date, the concept has been implemented in **Seoul** and **Suwon** in South Korea as well as in **Dubai** and **Las Vegas**.

CLIENT

PUMA

MULTIPLICATION

Seoul & Suwon, South Korea
Dubai | Las Vegas

OPENINGS

from 2023

RETAIL SPACES

Seoul 236 m² | Suwon 236 m²
Dubai 432 m² | Las Vegas 1.858 m²

CATEGORY

Sporting goods

SCOPE OF WORK

Multiplication

MULTIPLICATION

Worldwide multiplication, from individual products to entire projects:
from design and initial sample production to final multiplication.
Customised supply chain and after-sales service.

1 Contact



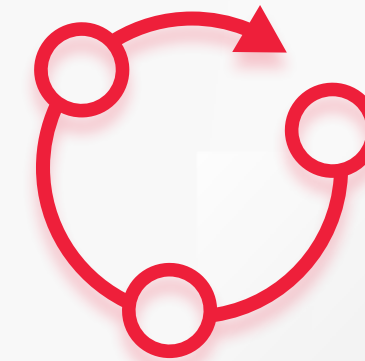
From prototype
to multiplication,
everything from
a single source

Realization



Guarantee of timely
technical realisation
within budget

Process



Process flow,
supply chain, delivery
and assembly

Implementation



Flexibility
and speedy
implementation

Seoul, South Korea

PUMA



The image shows a retail display for Puma running shoes. The main display is a large blue backdrop with the text "FOREVER FASTER." and "FUELED BY NITRO". Several Puma running shoes are displayed on shelves. A sign above the display reads "RUNNING". To the right, another display area is visible with a sign that reads "EVERYDAY RUN" and "TRAIL".



Seoul, South Korea



Suwon, South Korea







PUMA

EVER





FOREVER. DUBAI. دبي. لا بد



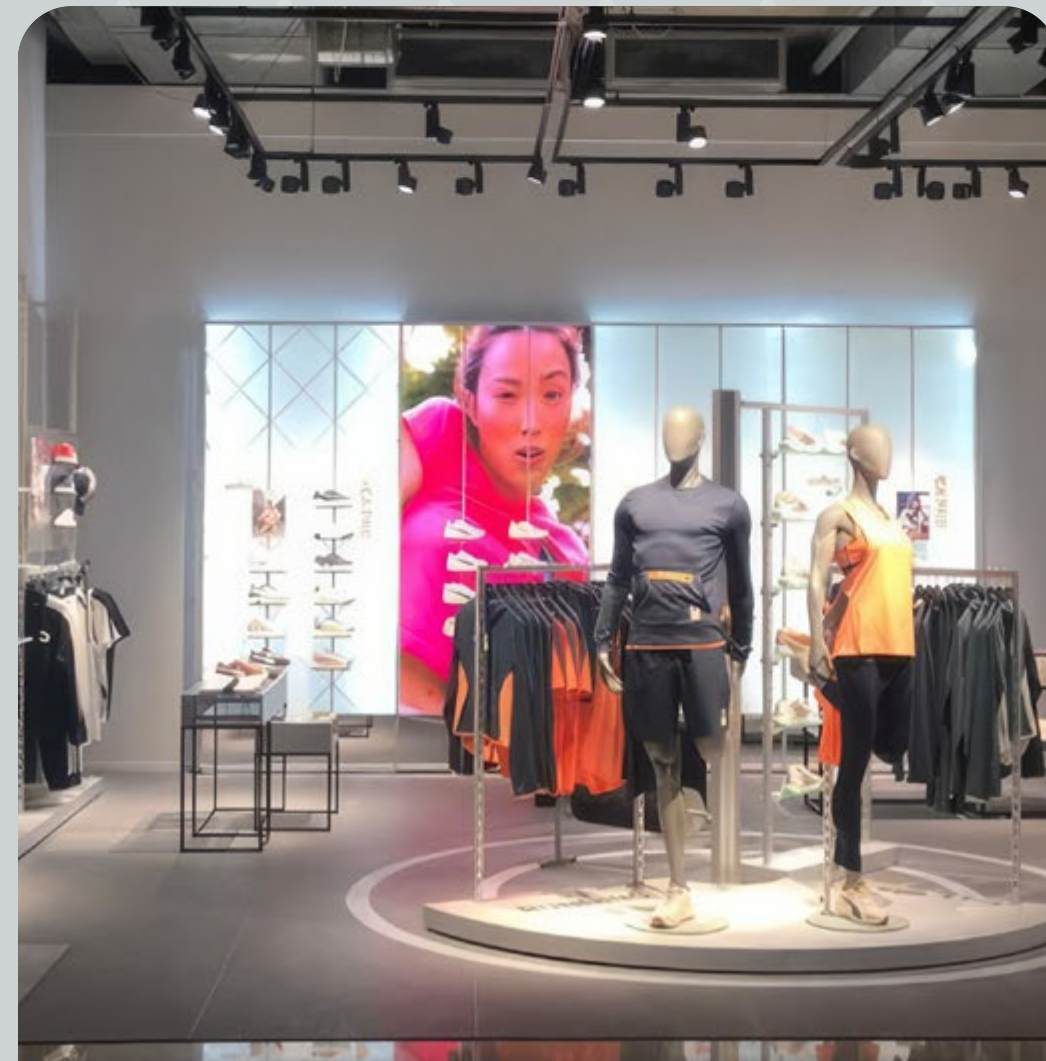
Prototype production facility

In our production facility in Naturns, South Tyrol, we manufacture prototypes of products and projects for our customers all over the world.



PROTOTYPE STORE

All furniture as well as fitting rooms and checkouts were manufactured for the PUMA Dark Store.



DARK STORE

The prototype store was installed at PUMA HQ after a successful test run.

Sustainable materials

For the new global concept, the use of sustainable materials was very important to the client. We therefore used sustainable materials based on in-depth research, availability and price structure.



WOOD

FSC-certified materials



METAL

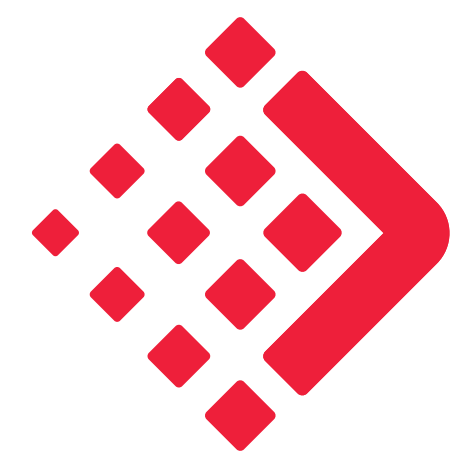
Aluminium instead of steel



CORK

Cork for the checkout furnitures

we think retail.



MULTIPLICATION

schweitzer 

